

rec'd 10-20-12



# LOUISIANA Nursery & Landscape NEWS

LNLA Quarterly Newsletter 2012 Vol. 39

July / August / September 2012

## LOUISIANA NURSERY & LANDSCAPE FOUNDATION GALA NETS OVER \$20,000 JUNE 22, 2012



*Left to right:*  
Rob Barry,  
Danny  
LaFleur,  
Larry and  
Viv  
Brasseaux

Keynote Address  
by John Russin,  
Director, LA  
Agricultural  
Experiment Station  
*(right)*



*Left to Right:*  
Allen Owings,  
Dan Gill, and  
Rob Barry  
auctioning a  
Louisiana  
Mud print.



Dan Gill trying to sell  
himself *(left)*.



Pat Newman,  
Natalie Bush  
and Annie  
Coco handled  
registration.  
*(Left to right)*

Rob Barry Went  
With an Eat More  
Possum Theme  
this Year *(right)*



The 3<sup>rd</sup> annual fund-raising Gala for the Louisiana Nursery & Landscape Foundation for Scholarship & Research (LNLFSR) was held on Friday evening, June 22, 2012, at the LSU Stadium Club in Baton Rouge. The setting was beautiful with a view of the Mississippi River in the distance on one side of the room, and a view into Death Valley, the LSU Tiger football Stadium, on the other side.

There were over 100 items available in the silent auction for the 122 people who attended to mull over and bid on, thanks to many donors. Dr. John Russin, Director of the LSU AgCenter's Experiment Stations, conveyed the current situation and his appreciation of the cooperation between the research stations and nursery &

*(Continued on page 19)*



# Your business will thrive with a little help from us!



## FREE

### Safety Gear Package offer!

Our Safety Gear Package comes with Safety Glasses, Posters, First Aid Supplies, and much more!

Contact us and mention you saw this ad and receive your **FREE** Safety Gear Package!

## Put our expertise to work for you!

Louisiana Nursery & Landscape Association proudly sponsors Meadowbrook Insurance Group for your workers' compensation needs.

We can assist you with the steps necessary to protect your business and save you money.



**MEADOWBROOK**  
INSURANCE GROUP.

**(800) 726.9006**

[directsales@meadowbrook.com](mailto:directsales@meadowbrook.com)  
[www.wcpolicy.com/lnla](http://www.wcpolicy.com/lnla)





## 2012 BOARD OF DIRECTORS & OFFICERS

**Mission...** To enhance the quality of life for people, conserve and protect the global environment, and promote the professionalism and profitability of the nursery and landscape industry in Louisiana.

**President**

**Todd Ellefson**  
Windmill Nursery, LLC  
PO Box 400  
Folsom, LA 70437  
(P) 800.535.1887, (F) 800.370.3854  
(E) [todd@windmillnurseryllc.com](mailto:todd@windmillnurseryllc.com)

**Vice-President**

**Gerritt Monk**  
Forest Hill Nursery Farm, Inc.  
353 N. Blacktop Extension  
Oakdale, LA 71463  
(P) 318.446.2020, (F) 318.748.6276  
(E) [gmonk@foresthillnsy.com](mailto:gmonk@foresthillnsy.com)

**Executive Secretary**

**Annie Coco**  
11050 Hwy 441  
Amite, LA 70422  
(P) 985.789.4301  
(E) [acoco@agcenter.lsu.edu](mailto:acoco@agcenter.lsu.edu)

**Treasurer**

**Pat Newman**  
Folsom Nursery, Inc.  
P. O. Box 580  
Folsom, LA 70437-0580  
(P) 985.796.3488, (F) 985.796.3488  
(E) [folsomnursery33@aol.com](mailto:folsomnursery33@aol.com)

**Past-President**

**Peter Newton**  
Newton Landscape Group, Inc.  
8930 Buzbee Drive  
Baton Rouge, LA 70809  
(P) 225.756.4321, (F) 225.756.4324  
(E) [pete@newtonlandscapegroup.com](mailto:pete@newtonlandscapegroup.com)

**Administrative Assistant**

**Laura Crnko**  
8409 Vincent Road  
Denham Springs, LA 70726  
(P) 225.667.4744,  
(E) [lcrnko@bellsouth.net](mailto:lcrnko@bellsouth.net)

**Webmaster**

**Dr. Paul Wilson**  
LSU Horticulture & Food Science Dept.  
137 J C Miller Hall  
Baton Rouge, LA 70803  
(P) 225.578.1025  
(F) 225.578.1068  
(E) [pwilson@lsu.edu](mailto:pwilson@lsu.edu)

**Director, Research & Education**

**Allen Owings**  
LSU AgCenter, Hammond Research Sta.  
21549 Old Covington Hwy.  
Hammond, LA 70403  
(P) 985.543.4125, (F) 985.543.4124  
(E) [aowings@agctr.lsu.edu](mailto:aowings@agctr.lsu.edu)

**Director, Training**

**Dan Gill**  
LSU Plant, Environmental & Soil Science  
155 J.C. Miller Hall  
Baton Rouge, LA 70803  
(P) 225.578.2413, (F) 225.578.0773  
(E) [dgill@agctr.lsu.edu](mailto:dgill@agctr.lsu.edu)

**Director, Associate (14)**

**Brian Bridges**  
BWI Co., Inc.  
PO Box 610  
Forest Hill, LA 71430  
(P) 318.748.6361, (F) 318.748.6704  
(E) [brianbridges@bwicompanies.com](mailto:brianbridges@bwicompanies.com)

**Director (14)**

**Margie Ann Jenkins**  
Jenkins Farms & Nursery, LLC.  
62188 Dummyline Road  
Amite, LA 70422  
(P) 985.748.7746, (F) 985.748.8219  
(E) [jfandn@l-55.com](mailto:jfandn@l-55.com)

**Director (14)**

**Robert 'Buddy' Lee**  
Transcend Nursery  
52063 Ridge Crest Drive  
Independence, LA 70443  
(P) 985.878.3567  
(E) [buddvazaleas@yahoo.com](mailto:buddvazaleas@yahoo.com)

**Director (14)**

**Mark Murrell**  
Murrell Trading Co., Inc.  
30185 Hwy 1 South  
Bayou Goula, LA 70716  
(P) 225.545.3336, (F) 225.545.3725  
(E) [mmurrell@wildblue.net](mailto:mmurrell@wildblue.net)

**Director (14)**

**Tom Fennell**  
Clegg's Nursery  
5696 Siegen Lane  
Baton Rouge, LA 70809  
(P) 225-937-5465, (F) 225-292-9158  
(E) [tefennell@cleggsnursery.com](mailto:tefennell@cleggsnursery.com)

**Director (13)**

**John Kavanaugh**  
Kavanaugh's Landscaping  
11695 Clay-Ansley Hwy.  
Ruston LA, 71270  
(P) 318.255.4340

**Director (13)**

**Buddy Perino**  
Perino's Garden Center,  
3100 Veterans Memorial Blvd.  
Metairie, LA 70002  
(P) 504.834.7888, (F) 504.837.0791  
(E) [spj335@gmail.com](mailto:spj335@gmail.com)

**Director (13)**

**Renee' Vanlangendonck**  
Chambers Tree Farm and Nursery  
P.O. Box 391  
LeCompte, LA 71346  
(P) 318.715.1313, (F) 318.776.1313  
(E) [renee@chambersnursery.com](mailto:renee@chambersnursery.com)

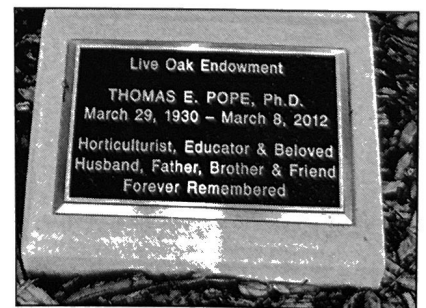
<b>Inside this issue:</b>	
<b>In The News</b>	<b>5</b>
<b>What Does LSU AgCenter Do For Me?</b>	<b>6</b>
<b>Knowing Your Canopy</b>	<b>10</b>
<b>Gray Leaf Spot</b>	<b>11</b>
<b>ISA New ReCertification Requirements</b>	<b>12</b>
<b>Green June Beetles</b>	<b>17</b>
<b>LNLA Donates \$25K</b>	<b>20</b>
<b>CNLP 2013 Schedule</b>	<b>22</b>



(Continued from page 12)

son), Donna Montgomery and Neil Odenwald presented memories of Dr. Pope at the event.

Article provided by, *Allen Owings, Professor (Horticulture, Nursery Crops and Commercial Landscaping)*



# NEWS, VIEWS & THANK YOU'S



June 11, 2012

Dear Ms. Coco (Louisiana Nursery & Landscape Association):

It is with gratitude to you and many thanks for your support of the Louisiana Association of FFA that I acknowledge that I am a second place winner in the Nursery Operations SAE. I spent the last year in service to the Louisiana FFA as Area 1 State Vice-President. I can honestly say that the money you have invested is well spent. I know I am a better person for having been involved in La FFA and plan to remain active in the organization and pursue my American Degree.

My SAE combined nursery operations and floriculture, as I hybridize and sell named daylilies and my hybrid seedlings. I soon hope to have my own named introductions registered for sale.

I was honored to be named the 2012 Louisiana State Star Farmer for my work with daylilies.

Again, thank you for supporting the Louisiana Association of FFA and for sponsoring the Nursery Operations SAE.

Sincerely,  
Nicholas Kyle Walker, Ruston, LA

June 14, 2012

Dear Louisiana Nursery & Landscape Association,

Thanks for your sponsorship of the Nursery Operations Proficiency Award. As a state winner, I am very grateful for your support and sponsorship of FFA. Your financial support will assist me with my future educational endeavors.

Your support of FFA is greatly appreciated and I hope you will continue supporting the FFA through students like me.

Thanks again,  
Cody Beard, Beau Chene High School Agriscience/FFA  
Arnaudville, LA

June 8, 2012

Dear Annie Coco (Louisiana Nursery & Landscape Association),

Thank you for being involved in the Louisiana FFA program. I joined the FFA in the 7<sup>th</sup> grade and have participated in prepared speaking, creed speaking, floriculture, and many CDE's. FFA has greatly enhanced my education and broadened my horizons. I've learned skills that I will use throughout my life.

Thank you again for your contribution to the Louisiana FFA program! Your support helps to encourage boys and girls to participate in the various activities offered by the program, thereby building strong citizens for the future!

Sincerely,  
Janney Arthur Mitchell

## A Word from our President

Hello all.

I hope this letter finds everyone after an enjoyable summer. It's hard to believe how fast the year is going by. It seems like just yesterday we were at the Gulf States Horticultural Expo in Mobile. Now, it's just 5 months away until the 2013 show!

I attended the TNLA Expo in Houston recently. The trade show was well attended. It seems though that summer trade shows are more of a meet and greet than a selling show. Businesses no longer send 6 to 8 employees to shows any more, it seems to usually just be the owner and/or the buyer. So the shows feel less crowded, but at the end of the day a vendor is more than likely still touching a lot of the same customers it always has, just not as many employees. All in all though, it was a very good show.

At our recent board meeting, Dr. Regina Bracy made a request to the board to assist in the funding for an expansion of the Hammond Research stations trial gardens. She presented her plan and budget to better the gardens and add new trials to what they are already doing. The board unanimously agreed to grant the station \$25,000 to begin the expansion. Please be looking forward to the great additions that will be coming to the station soon. This was all possible by your membership and continued support in LNLA.

Recently, Rick Cicero who has been on the board for several years and been a great server for you and the association, informed me that he would be stepping down immediately from the board in order to concentrate on his business. I wish Rick the best and want to thank him for that he has done for the association.

I hope that the fall season is a good one for everyone and I look forward to seeing you soon.

Sincerely,

Todd Ellefson  
President



Nursery Operations – 3<sup>rd</sup> place winner  
Many, LA

June 28, 2012

Dear Donor,

The Louisiana FFA Foundation would like to thank you for your generous contribution you made during the 2011-2012 school year. The year was culminated in a great State FFA Convention where we awarded those students who excelled in their study areas. At convention we also recognized you as a sponsor by including you in our official program and

*(Continued on page 21)*



## In the News

### IN MEMORIUM



**Dr. Carlos Smith, Jr.**, retired LSU AgCenter horticulture agent, lost his battle with cancer on August 13, 2012.

Carlos was born in Monroe, LA in 1948. He received both his BS (1969) and MS (1972) from Northeast Louisiana University, which is now ULM. He then received his PhD in Horticulture from LSU of Baton Rouge in 1981.

Carlos moved to Avoyelles Parish in 1977 to begin teaching at LSUA. He taught there until he took the job of county agent in 1982. He worked there until his retirement in 2009. During his years as county agent, Carlos became known as an expert on anything that had to do with plants. His love of people and plants became well known throughout the state. Although he retired in 2009, he was still a regular at the county agents office answering questions and visiting with the people of the parish. In recent years, Carlos had been very active in teaching the Master Gardener course, especially in Avoyelles and Rapides Parishes. His humorous style of speaking made him also a respected and revered guest lecturer throughout the state.

I first met him in 1974 when he was my immediate supervisor for one summer, when I first worked for the LSU Horticulture Department as a student worker. We created "totem poles" supports for vining plants in a greenhouse by putting chicken wire loosely around greenhouse support poles and stuffing them with sphagnum moss. It was hot and prickly to the hands. Carlos' wit and friendly demeanor made it tolerable. He was a unique character, whose presence I always enjoyed through the years.



**Mary Lula Laslie Grodner**, PhD, 77, a long time resident of Baton Rouge, Louisiana departed this life on September 5, 2012.

She received her Masters of Science Degree in Zoology in 1957 and PhD in Entomology in 1973, both from LSU.

Mary served as a Pesticide Safety Specialist for the LSU Agricultural Center as well as the long time Pesticide Coordinator for the State of Louisiana. During her service with the LSU Agricultural Center, Mary authored numerous articles that have been widely published. Being a sought after speaker, she also made hundreds of presentations on the national and state level regarding pesticide labeling and usage, and other technical matters. She was also a member of numerous professional and scientific honor organization

In lieu of flowers, the family requests that donations be made in Mary's name to the Annie Berry and Joseph Laslie Scholarship Fund at Wesleyan College, 4760 Forsyth Road, Macon, Georgia 31210.

### CONGRATULATIONS

**Peter Gallagher** Retiring from Louisiana Tech University

Word leaked in late April that Louisiana Tech University professor of horticulture Peter Gallagher would be retiring soon. This came as a surprise to many, but Dr. Gallagher has spent over 30 years educating our future landscape horticulture professionals in the Department of Agricultural Sciences at Louisiana Tech University in Ruston.

Dr. Gallagher holds an honorary membership in the Louisiana Irrigation Association and has been recognized by the Louisiana Nursery and Landscape Association for distinguished service.

In a recent e-mail Dr. Gallagher said "between church activities, the Rose Center (American Rose Society, Shreveport), neighborhood and City of Ruston Planning and Zoning assignments, writing articles (for Louisiana Gardener magazine, of course), and personal yard and home upkeep, I plan to have plenty to do".

We wish Dr. Peter Gallagher all the best in his retirement and say "thank you" for your years of service to Louisiana's horticulture industry.



Congratulations to **Don and Elena Fennell**, in the birth of their baby girl. Gianna Rose Fennell was born July 17th, weighing 6 lbs. 7oz., with a head full of black hair. Don is a grower at **Clegg's Nursery** and a brother to, Tom Fennell. Elena Fennell is secretary of BRLA and is also employed at Clegg's Nursery.

### SCHOLARSHIPS

Sidney B. Meadows said, "Investing in our students is the best investment we can make in for our future". The Sidney B. Meadows (SBM) Scholarship Endowment Fund is a 501(c)3 charitable foundation providing academic scholarship to students in 16 states. The SBM foundation is funded by individual and corporate donations and governed by the SBM Scholarship Endowment Fund board of directors.

Scholarships are determined through a competitive application process, by a select committee, based on academics, demonstration of interest in horticulture, and financial need. Thirty well-qualified applicants competed for this years funds. Twelve students from eight universities were awarded a \$1,500 scholarship; totaling \$18,000. Visit [www.sbmsef.org](http://www.sbmsef.org) for a complete list of scholarship recipients and their back grounds.

For more information: login to [info@sbmsef.org](mailto:info@sbmsef.org), call 678.813.1880, or write PO Box 801513, Acworth, GA 30101.





## LSU AgCenter Ornamental Update

### What Does The LSU AgCenter Do For Me?

You may wonder "What Does the LSU AgCenter Do For You"? This is a fair question. Opportunities abound for nursery growers, landscape professionals, retail garden center business and more to take advantage of LSU AgCenter research and extension programs. The LSU AgCenter is 40 years old in 2012 and the work of research scientists at the Louisiana Agricultural Experiment Station has been ongoing now for 125 years.

The **Plant Diagnostic Clinic** is primarily staffed by Nick Singh and handles disease identification, but also includes insect identification, weed identification, and provides management and control guidelines for each problem. Our LSU AgCenter state appointed faculty dealing in pest and weed management issues are Dennis Ring (entomology), Don Ferrin (plant pathology) and Ron Strahan (weed science). The LSU AgCenter's **Soil Testing and Plant Analysis Lab**, housed on campus in the School of Plant, Environmental and Soil Sciences, provides soil, soilless media and leaf tissue testing for home gardeners and horticulture industry members at a very reasonable cost.

**Field Days** are a traditional part of what most folks visually see as a LSU AgCenter program. Outreach at field days and related events has been increased significantly in the past 5 years. The Hammond Research Station holds an annual landscape horticulture field day in October and Burden Center has the new garden festival in the summer each year. There are many other "on site" events at these stations throughout the year. For instance at Hammond, an industry association open house was held earlier this year and participants at the Mid South Green Industry Conference toured the station's research plots.

**Continuing Education** units for irrigation contractors, arborists, and landscape architects required by the Louisiana Horticulture Commission are conducted by LSU AgCenter faculty in cooperation with the Louisiana Department of Agriculture and Forestry, Louisiana Irrigation Association and other groups.

**Ornamental and Turfgrass Pesticide Re-Certification Training** for commercial applicators is held four times annually. Typically these workshops are scheduled in Kenner, Bossier City, Lafayette and Hammond. Cooperating with the Louisiana Department of Agriculture and Forestry, licensed professionals can review the latest information on pesticide recommendations, best management practices and more.

**Certified Nursery and Professional** reviews, workshops and exams are held by the Louisiana Nursery and Landscape Association with instruction provided by LSU AgCenter horticulturist Dan Gill. A new portion of this effort the last two years has been the development of horticulture training for vocational agriculture high school faculty. This hopefully will lead to more horticulture instruction in our educational system.

The LSU AgCenter has two **Research Stations** dedicated to the ornamental horticulture and landscaping industries in the state. The Hammond Research Station is 7 years into a new landscape horticulture focus and Burden Center is our long standing station in the Baton Rouge area. Faculty at the Hammond Research Station are Regina Bracy, Yan Chen and Allen Owings. Jeff Kuehny is now leading the efforts at Burden Center where campus faculty conduct research. Horticulture professor Ed Bush conducts nursery media and irrigation research at Burden Center. The EBR parish extension horticulture agent (Bob Souvestre) is now permanently

*(Continued on page 21)*



# "QUALITY PLANTS"



## GEORGE JOHNSON

### NURSERY, Inc.

MEMBER

A.N.L.A. • L.N.L.A. • T.A.N. • A.N.A.  
O.N.A. • S.N.A. • N.C.A.N




## Container & Field Grown Material

George M. Johnson, Jr.  
Owner

Murphy Johnson  
President

Mark Lachney  
Manager

Linda Prosha  
Assistant Manager

3848 Highway 112  
Forest Hill, LA 71430  
Phone: 1-318-748-6715  
Fax 1-318-748-6893  
Toll Free 1-888-755-5653  
<http://www.growit.com/geojohnnsy>



# Jenkins Farm & Nursery, L.L.C. Mark Jenkins Nursery

Container and field grown shrubs and trees, including the following:

- ◆ Wide variety of Azaleas ◆ Sasanquas ◆ Gingers ◆ Palms ◆ Native Shrubs and trees ◆ Ground Covers ◆ Large Native Azaleas ◆ Japanese Magnolias ◆ Japanese Maples ◆ Cleveland Select Pears ◆ Native Yaupon ◆ Parsley Hawthorn ◆ Pine Straw

**“Make this your one stop for Landscaping needs”**

62188 Dummyline Road, Amite, LA 70422

Phone (985)748-7746 ◆ (985)748-6177 ◆ Fax (985)748-8219

## WESTFARMS NURSERY

A COMPLETE WHOLESALE NURSERY FOR  
THE LANDSCAPER AND RETAIL BUYER

Container Grown  
Azaleas  
Trees  
Hollies  
Ornamentals



*Hybridizer of Daylilies  
for Landscapes  
of Distinction*



**Dale & Lynette Westmoreland**  
13529 Hwy 450  
Franklinton, LA 70438  
Ph/Fax: (985)- 839-5713





**LNLA extends a warm WELCOME to the following NEW Members...**

- Curb-A-Garden** ..... Steve Bucher
- Greenscape Nursery, LLC**..... Andy Breaux
- Healthy Plant, LLC**..... Jonathan Toye
- Stephen Michel Land Design Group** . Stephen Michel
- Treppendahl Tree & Landscape** ..... Rob Treppendahl

**NOTES FROM THE SECRETARY**

Hi to LNLA Members,

I am honored and delighted that I am now serving as Executive Secretary for LNLA and LNLFSR (Louisiana Nursery & Landscape Foundation for Scholarship & Research). I thank the Board for this opportunity to be of service to this association.

The Louisiana Nursery & Landscape Foundation for Scholarship & Research held its third annual Gala on Friday, June 22, 2012, at the LSU Stadium Club in Baton Rouge to raise funds for scholarships and research. We had a great time and, thanks to those who attended or donated, raised over \$20,000 for scholarships and horticulture research. The Foundation Board will meet in the fall to review scholarship requirements and start planning for next year.

The dates and locations for two 2013 CNLP (Certified Nursery & Landscape Professional) Manual Reviews & Exams have been confirmed. The first will be January 24-25 at Burden Conference Center in Baton Rouge. The second will be July 25-26 at ULL Ira Nelson Horticulture Center in Lafayette. See the form elsewhere in this newsletter or on the lnla.org website to sign up if you, or someone you know, want it.

At the LNLA Board of Directors meeting on July 25, 2012, a request was made from the Hammond Research Station for \$25,000 to create ornamentals research beds into another 10 acres of their facility. After questions to Dr. Regina Bracy, who presented the request, and discussion, the Board approved the donation. The research results will benefit all of the nursery & landscape industry in the future. See the article on their plans for the future and more information on the approved request elsewhere in this newsletter.

The Board will meet again on October 10 and December 5, 2012. If there is any issue or request you wish to be brought to the Board, or that I may be able to help you with, please contact me at [acoco@agcenter.lsu.edu](mailto:acoco@agcenter.lsu.edu) or 985-789-4301. This is your association and I welcome input from you.

Later,

Annie Coco

Annie Coco  
 Executive Secretary  
 Phone 985.789.4301  
 Email [acoco@agcenter.lsu.edu](mailto:acoco@agcenter.lsu.edu)



**BRAUN HORTICULTURE**  
 "A Quality Product for Professional Tree Handling"

**Continuous Wire Baskets™**  
 Visit us on the web at [WWW.BRAUNGROUP.COM](http://WWW.BRAUNGROUP.COM)

Pick a Daisy

The Daisy® - fast, secure, economical packaging of any shape rootball.

The Continuous Wire Basket is "made to measure and made to fit"

**Wire Baskets for**  
 OPTIMAL - ROKOR - DUTCHMAN - STOCKER - VERMEER - BIG JOHN - CLEGG - CARETREE - BURKEEN - SHORT BASKETS - 22", 25", 30"

**"BALLBOY"**  
 Makes a Perfect B & B Package  
 One "pigtail" crimp tightens wire lacing to form a very professional package.

**tailorfit**  
 Reduction in labor. Proven quality basket.

Practical Economical

Call our TOLL FREE number for advice on ANY basketing question or problems.

UNITED STATES  
 PHONE (888) 732-7266  
 FAX (716) 282-6103

CANADA  
 PHONE (800) 246-6984  
 FAX (905) 648-8441

**VIDEO ON REQUEST**

## REGIONAL REPORT FROM GREEN INDUSTRY ASSOCIATIONS

### ► BATON ROUGE LANDSCAPE ASSOCIATION

The summer meeting of the Baton Rouge Landscape Association was held on Wednesday, July 25th, at Walk-On's Bistreaux & Bar in Baton Rouge. Dr. Jeff Kuehny, our invited guest speaker and Director of LSU's Burden Center, focused on the major elements of Burden's master plan, and highlighted Burden Center All-America Selections. The meeting was sponsored by Jason Jumonville and Billy Perry of Southern Aggregates.

BRLA's Fall Association meeting is set for Friday, September 28th, 7pm, at Bass Pro Shop in Denham Springs; the Christmas meeting will be Wednesday, December 5th, 7pm, at Juban's Restaurant in Baton Rouge.

Please email Elena Fennell ([ecfennell@cox.net](mailto:ecfennell@cox.net)) for the 2012 membership form or for more information on BRLA and upcoming meetings. Your support is greatly appreciated!

### ► LOUISIANA IRRIGATION ASSOCIATION

Our Annual Meeting and Recertification training has been set. It will be on October 2, 2012 at Ralph & Kacoo's Restaurant on Bluebonnet Blvd. in Baton Rouge. Registration will begin at 7:30 A.M. and the training will begin at 8:00 A.M. The day long program, Irrigation System Installation and Maintenance, will be presented by Mike Goree, CIC, and CLIA.

The Annual Meeting luncheon will take place at 11:45 and last till 12:45 P.M. there at Ralph & Kacoo's on October 2nd and we'll have our election of Board Members and Officers at that time. If you are interested in registering for the Annual Meeting and training you can go to our website at [www.li-a.org](http://www.li-a.org) and click on certification. You can download the registration form and mail in the registration amount or you may pay by PayPal on line.

The Annual 2012-2013 LIA Directory will be available in July and a copy will be sent to each of our current 119 members. If you'd like to become a member, you may go to the above mentioned website and click on join-apply now. It's only \$100.00 a year and the Member benefits include: an educational and newly reformatting quarterly Newsletter; a yearly Membership Directory, available both in print and/or electronically; outstanding training for professionals who have their Landscape Irrigation Contractors license and who need recertification CEU's and training for those individuals who do not have their Landscape Irrigation Contrac-

tors license but who want to obtain their license; legislative lobbying efforts both state and national; a members only section on the website, [www.li-a.org](http://www.li-a.org); and cooperative efforts with the Louisiana Department of Agriculture and Forestry as well as the LSU AgCenter.

*Prepared by Severn C. Doughty, Sr. Ph.D., LIA Executive Secretary/Treasurer*

### ► NEW ORLEANS HORTICULTURE SOCIETY

Hello fellow N.O.H.S. members! After a short break it is time for our next meeting. Many thanks, to Rick Webb, for speaking at our last meeting in June. Seventeen members were in attendance. Thanks to everyone who attended.

Our next meeting will be held Thursday, August 30th at 6:30 p.m. at the Garden Study Center in the New Orleans Botanical Gardens. It is time once again for elections of officers. All current officers have offered to serve again for another year. However, anyone interested in holding an office position can put their name in the hat at this meeting. You can also nominate someone else if you like.

After elections we will have a speaker. This meeting's featured speaker will be Ricky Becnel, discussing, "All Aspects of Citrus Care and Upkeep." Ricky is a fifth generation citrus grower in Plaquemines parish and knows everything there is to know about citrus. A question and answer discussion will follow Ricky's presentation so if you have any questions write them down and bring them to the meeting.

Please reply to this e-mail if you plan on attending so that we can better prepare for the amount of refreshments the Society will provide. Also, there is an attachment in this e-mail for membership dues for 2012. If you have not paid your dues, please consider doing so. Your dues help support the Society by continuing to provide refreshments at the meetings, having social functions, and going on field trips. Your support is greatly appreciated. See you at the next meeting!

Meetings are tentatively scheduled for the third Thursday of each month unless otherwise noted. Don't forget to bring your extra plants, seeds, vegetables, produce, etc. to swap at the meetings. A special thanks to Jean Fahr with Parkway Partners for providing everyone who attended the last meeting with calendars

*(Continued on page 21)*



Support Louisiana's green industry by joining your regional association. Contact the following:

**BRLA:** Elena Fennell, Secretary, (E) [ecfennell@cox.net](mailto:ecfennell@cox.net)

**CLNA:** Myra Poole Maloney, President, PO Box 485, Forest Hill, LA 71430-0485, (P) 318-748-6527, (E) [hcn418@aol.com](mailto:hcn418@aol.com).

**LIA:** Severn C. Doughty, Sr., Executive Secretary/Treasurer, (E) [scd357@cmaaccess.com](mailto:scd357@cmaaccess.com)

**NOHS:** Russell Harris, Secretary, (E) [nohs@agcenter.lsu.edu](mailto:nohs@agcenter.lsu.edu)

**SELNA:** Annie Coco, SELNA Secretary, PO Box 848, Amite, LA 70422 (P) 985-789-4301, (E) [acoco@agctr.lsu.edu](mailto:acoco@agctr.lsu.edu)





## Landscape Design Sketchbook

-green laws, design principles, designer plants-  
Buck Abbey, ASLA  
Associate Professor, Robert Reich School of Landscape Architecture  
Louisiana State University

*"Trees can help to reduce energy costs, improve air and water quality, and provide urban residents with a connection to nature."*  
*Tree Guidelines, Greg McPherson January 2000*

## Knowing Your Canopy

Green laws are ordinances, codes and standards that deal with nature in the city. Across the nation the two types of green laws that deal with trees are municipal tree ordinances and local landscape codes.

### Landscape Codes

Landscape codes are responsible for planting new trees following construction. Landscape codes are part of zoning so one might think of landscape codes as zoning for trees. Landscape codes specify the species of tree, its size and where it is to be planted.

Landscape codes often include a *minimum canopy standard* that is the number of trees per acre that must be planted to replace trees that are removed for development.

### Tree Ordinances

Tree ordinances on the other hand are primarily responsible for protecting and regulating activities associated with public trees or trees on private land.

The most common tree ordinances are written to establish public street trees and for the planting and care of trees on public land. Some ordinances regulate trees on private property too, especially when they overhang public streets and boundary lines.

In recent years changes are being made in tree ordinances that go beyond the individual tree and apply to the entire urban forest.

### New Tree Standards

But most exciting of all, new standards are being developed based upon increasing technology available to landscape architects or urban foresters.

Technology developed by research scientists with the **USDA Forest Service** and State forestry agencies such as the **Louisiana Department of Forestry** are giving planners a new dimension to see the benefits of the urban forest.

Tree research with the use of *i-Tree* and sophisticated calculations are able to quantify data that is leading communities to adopt *minimum canopy coverage standards*.

## Knowing Your Canopy

The **City of Mandeville** Planning Department recently commissioned a study of their urban forest so they would better understand its environmental benefits.

The urban forest ecosystem study was conducted Dr. Kamran Abdollahi and Dr. Thomas Legiandenyi of the Urban Forestry Department at **Southern University**. They set up 150 field testing plots throughout the city to gather tree data.

Southern faculty and students used *i-Tree Eco* based on the *UFORE Model* (Urban Forest Effects Model) developed by the USDA Forest Service to calculate environmental and economic benefits of the trees in Mandeville.

Some interesting data came from the study that sets a much higher value on the importance of community forests.

As a result of on the ground survey, air photo analysis and computations they defined species composition, diversity and tree sizes for the forest within the city. From this data they were able to determine spacing density, tree biomass, tree canopy coverage and pollution removal for ozone, sulfur dioxide, nitrogen dioxide, carbon monoxide and particulate matter all things that affect the health and well-being of citizens.

They established solid facts about the value of the urban  
*(Continued on page 19)*



## PLANTS... A PATHOLOGIST'S PERSPECTIVE

### GRAY LEAF SPOT

Gray leaf spot, caused by the fungus *Pyricularia* (or *Magnaporthe*) *oryzae* (previously called *Pyricularia* (or *Magnaporthe*) *grisea*), occurs on a wide range of turfgrasses throughout the United States. In Louisiana, this disease is most commonly associated with St. Augustinegrass; however, it can sometimes be problematic on bermudagrass and centipedegrass as well. This disease is generally associated with drought stress, soil compaction and high nitrogen fertility and typically occurs from mid-summer to early fall. Disease development is favored by periods of warm (82-90 F), humid weather with sufficient leaf wetness (9 hours) for spore germination and pathogen growth. Disease develops especially well when the turf undergoes prolonged periods of alternating wetting and drying.

The primary symptoms of gray leaf spot on St. Augustinegrass are the presence of round to oblong spots on the leaf blades that first appear as small, brownish-colored lesions that expand rapidly resulting in lesions with a purplish or brown-colored margin and a light tan- to gray-colored center (Fig. 1). During periods of warm, humid weather when the fungus is actively sporulating, the lesions may be covered with gray masses of conidia. These conidia are then dispersed by wind, water and various types of lawn equipment. Lesions that extend across the leaf blade will kill it. As the disease progresses and becomes more severe, areas of affected turf

appear dry and the leaf blades often shrivel and die (Fig. 2).

Because the disease is more severe on rapidly growing turf that is subject to stress, practices that reduce these stresses are important in its management. Avoid over-fertilization with nitrogen, especially quick release formulations, during the summer months. Irrigate on a regular basis as needed to promote a deep root system, which will help the turf get through periods of drought. In some cases, it may be necessary to aerate the lawn to reduce compaction that impedes root growth.

Fungicides can be effective in the control of gray leaf spot, but overreliance on strobilurin (i.e., azoxystrobin, pyraclostrobin or trifloxystrobin) or benzimidazole (i.e., thiophanate-methyl) fungicides can lead to the development of fungicide resistance in the pathogen. These groups of fungicides should be alternated or tank-mixed with a protectant fungicide with a different mode of action, such as chlorothalonil mancozeb. Good control can also be obtained when these protectant fungicides are combined with a DMI fungicide (i.e., propiconazole or triadimefon). Remember, although chlorothalonil may be used on golf courses and commercial turf, it is no longer labeled for use on residential lawns!

For more on impatiens downy mildew, there is a wealth of information available at <http://www.endowment.org/>.



Fig. 1. Typical gray leaf spot lesions on St. Augustinegrass.



Fig. 2. Scorched appearance of St. Augustinegrass due to gray leaf spot.



Article written by Dr. Don Ferrin, Extension Specialist in the Department of Plant Pathology & Crop Physiology, LSU AgCenter, Baton Rouge. (P) 225. 578.8537, (C) 225.573.6510, (E) [dferrin@agcenter.lsu.edu](mailto:dferrin@agcenter.lsu.edu)





## ISA Issues New Recertification Requirements for Certified Tree Workers

The August 2012 issue of *Arborist News* announced new requirements for those of you who hold an ISA Certified Tree Worker Climber Specialist or ISA Certified Tree Worker Aerial Lift Specialist credential. Take a peek at new requirements below, especially if your certification is set to expire soon.

Safety awareness and responsiveness are a big part of the Tree Worker credentials and are vital to the tree care industry as a whole. Therefore, the Certification Board implemented these requirements to ensure credential holders are trained and knowledgeable if they are called upon to help when an individual's safety is compromised. Starting this year, Certified Tree Worker Climber Specialists and Certified Tree Worker Aerial Lift Specialists are required to provide current proof of training in cardiopulmonary resuscitation (CPR), first aid, and aerial rescue (for Climbers *only*). These are additional to earning the required fifteen (15) CEUs for completion of the recertification process.

Tree Worker Climber Specialists will be required to submit evidence of CPR, first aid, and aerial rescue training. Tree Worker Aerial Lift Specialists will be required to submit CPR and first-aid training verification.

### Proof of training in CPR and first aid can be any one of the following:

- A copy (front and back) of a valid CPR and first-aid card from the Red Cross or American Heart Association
- A certificate of completion in training of CPR and first aid (ISA reserves the right to verify the source of training)
- A written verification from employer

### Proof of training in aerial rescue can be any one of the following:

- A certificate of completion of the NAA Electrical Hazards Awareness Program (EHAP)
- A certificate of completion in training in aerial rescue (ISA reserves the right to verify the source of training)
- A written verification from employer

Documentation must be provided at the time of recertification along with recertification payment. The ISA Certification Department must receive the required evidence of training before recertification can be issued. ISA will send recertification notifications 30 days prior to each certification expiration date along with a list of documentation needed to complete the recertification process.

Submit your recertification payments and proof of training to ISA by fax, e-mail, postal service, or by logging into an ISA account online. If you pay online payment, however, you must fax, e-mail, or mail all supporting documentation to the ISA Certification Department before the recertification payment will be processed.

The required CPR, first-aid, and aerial rescue trainings qualify for CEUs once during each certification period. They will *only* apply toward the certification period in which they are earned. As a reminder, CEUs do not roll over. Once the recertification process is complete, the CEU total returns to zero (0) and accrual of required CEUs starts over in the new three-year timeframe.

*The LSU AgCenter Louisiana Arborist Continuing Education provides educational opportunities, including First Aid and CPR training for state licensed tree care professionals across Louisiana. Look for the 2013 class schedule online at [www.lsuagcenter.com/arborist](http://www.lsuagcenter.com/arborist) in December. Or contact Dr. Hallie Dozjer at [hdozjer@agcenter.lsu.edu](mailto:hdozjer@agcenter.lsu.edu). Find us on FaceBook at <https://www.facebook.com/LouisianaArborist>*



## Live Oak Endowment Dedicated to Dr. Tom Pope

A ceremony was held on the LSU campus Saturday June 23 to dedicate one of the beautiful signature live oaks in front of Julian C. Miller Hall in memory of Dr. Tom Pope, former extension horticulture specialist. The tree is part of the LSU Foundation's Live Oak Endowment.

Dr. Pope retired in the early 1990s after a 35 year career of educating home gardeners and horticulture professionals in ornamental horticulture and landscape horticulture. Plant accomplishments included promotion of taiwan cherry trees and Chinese pistachio, the introduction of a named southern magnolia variety and the cooperative effort with a Forest Hill nursery grower to introduce the Bonnie variety of dogwood. David Pope (Tom's

*(Continued on page 3)*



# Plant problems? We can help!

Routine Diagnostic  
**\$20**



The LSU AgCenter's Plant Diagnostic Center is a one-stop shop for all your plant health problems. The center provides rapid, accurate diagnosis of the cause of the problem and delivers best management practices recommendations for long-term management.

## LSU AgCenter Plant Diagnostic Center

For more information, visit our website: [LSUAgCenter/PlantDiagnostics](http://LSUAgCenter/PlantDiagnostics)



### POOLE BROS. NURSERY

*Customer Service and Quality  
are Top Priorities!*

Grower of Azaleas, Evergreens,  
Woody Ornamentals,  
Ornamental Grasses and Groundcovers

3334 Hwy 112 • Lecompte, LA 71346

**1-866-665-6579 • (318) 748-6579**

Fax (318) 748-7441 • E-mail: [poolebrosnysy@msn.com](mailto:poolebrosnysy@msn.com)

**Debbie Head, Owner**



### Native Louisiana Iris

and their hybrids  
provide color for water, wetland  
environments and perennial flower beds.  
Easy to naturalize, establish and maintain.

Provide bloom in spring.  
Provide green foliage in winter.  
Tough field grown bare root plants.

*Bois d'Arc Gardens*  
1831 Bull Run Road  
Schriever, LA 70395  
Phone: 985-446-2329  
Cell: 985-209-2501

Contact: Bud or Rusty McSparrin  
for more information and wholesale  
pricing.

Web site: <http://www.bois-darc.com>

Email: [bois@charter.net](mailto:bois@charter.net)



# Blumberg Means Business



## Making Business Secure...

*One Handshake At a Time*



**Blumberg and Associates, Inc.**

Andy Blumberg

8560 Jefferson Hwy • Baton Rouge, LA 70809

225-767-1442 800-349-1442

[www.blumbergassoc.com](http://www.blumbergassoc.com)



Property | Liability | Workers' Comp | Auto | Health | Life





Since 1988, we have specialized in field grown and container shade and ornamental trees. Our customers depend upon us to provide the finest quality trees and service available in the industry.

We continually strive to improve production and service.

Our #1 goal is to ensure quality plant material and

***Complete Customer Satisfaction!***

**Gerald Foret Wholesale Nursery, Inc.**

4214 Forrest LeBlanc Road

New Iberia, LA 70560

(337) 365-4858 • Fax (337) 364-6520

or visit us on the web at:

**[www.geraldforetnursery.com](http://www.geraldforetnursery.com)**

Member of: LNLA, TNLA, ANA, MNA



**HOME OF THE CAJUN LIVE OAK**



# PROFESSIONAL LANDSCAPING



## and GROWER SUPPLIES



BWI is a distributor of lawn, garden and horticultural products to garden centers, farm and feed stores, hardware stores, grocery stores, regional multi-store outlets, greenhouse growers, nursery growers, landscapers, lawn companies, and other related outlets.

**BWI Forest Hill**  
800.242.7234

**BWI Jackson**  
800.385.2580

**BWI Texarkana**  
800.442.8443



PROFESSIONAL



### More choices. Better blends. Healthy plants.

- More than 20 pre-customized formulations, with pre-defined longevities
- Patented, 100% coated, homogeneous N-P-K prills blended with micronutrients and other coated and uncoated nutrient sources
- Consistent nutrition for a wide range of plants, from Azaleas to Zebra Grass



For more information contact:  
Charlie Owens, Territory Manager  
(251) 621-8292  
charles.owens@everris.us.com

www.OsmocoteIsBest.com

© 2010, The Scotts Company LLC, World Rights Reserved.



## THE BUG DOCTOR



### Green June Beetles

Green June beetles, *Cotinis nitida* (Linnaeus), are members of the order Coleoptera (beetles) and are not bugs.

Beetles have hardened front wings that are called elytra, chewing mouthparts, and complete metamorphosis (egg, larva, pupa, and adult). In contrast, bugs have front wings that are half membranous and half hardened at the base (hemelytron) or completely membranous, sucking mouthparts, and incomplete metamorphosis (egg, nymph, and adult). This beetle is native to the United States and is found in an area bounded by Texas, Florida, New York, and Nebraska. It is a white grub, and the adults of white grubs are called May beetles or June beetles.

Adult green June beetles may be confused with adult Japanese beetles. (Adult green June beetle, Natasha Wright, Florida Department of Agriculture and Consumer Services, Bugwood.org, *pictured above*). The Japanese beetle is a serious pest that may become introduced in Louisiana. It is important to know if the Japanese beetle is found in Louisiana. Thus, it is important to be able to tell green June beetles from Japanese beetles.

Adult Japanese beetles are 3/8 to 1/2 inch long. The thorax is green and the front wings are metallic reddish brown. Adult Japanese beetles have five tufts of white hairs on each side of the abdomen. Additionally, there is a pair of white tufts of hairs on the end of the abdomen. The head and legs are black.

Adult green beetles are 0.5 inch wide and 1-inch long. The underside of the adult is metallic green and has orangish yellow areas. The edges of the shield behind the head (pronotum) and front wings are brownish yellow, and the top of the front wings are velvety green. The head and legs are mostly metallic green.

Green June beetles are larger than Japanese beetles. The tops of the front wings or wing covers of green June beetles are green, while those of the Japanese beetle are metallic reddish brown. Additionally, Japanese beetles have the white tufts of hairs, and a black head and legs. If adult Japanese beetles are found in Louisiana, collect the beetles and send them to Dr. Dennis Ring, Dept. of Entomology, 404 Life Sciences Building, Baton Rouge, Louisiana 70803.

The eggs of green June beetles are oval in shape and gray in color. The larvae are up to 2 inches long in length, have true legs, have a dark brown head and a C-shaped body that is

creamy white. The larvae will coil up tightly if disturbed.

Eggs are oviposited in soil with decaying plant matter. Larvae hatch from the eggs in about 2 weeks and feed on manure, roots, decaying plants and humus. Newly emerged larvae are 3/8 inch long. Larvae feed near the soil surface at night and move deeper in the soil during the day. They overwinter in the soil at depths up to a foot or deeper. The larvae move close to the surface of the soil in the spring when temperatures reach 60 degrees F. Pupation occurs in May in earthen cells at a depth of 2 to 6 inches. The pupal stage lasts for 2 to 3 weeks, and adults remain in the cell in the soil for 1 to 2 weeks. Adult emergence occurs in June, July, or August and these beetles have one generation per year. Adults emerge following rains that soften the soil. Female beetles release sex pheromone from mid-morning to mid-afternoon. Males fly at waist height in a zigzag pattern searching for females. After mating, females fly close to the surface searching for moist areas with high organic matter (decomposed hay or decomposed manure piles). The female green June beetle digs 5 inches deep in the soil to build a walnut-sized ball of soil and lays 10 to 30 eggs in the ball. At oviposition, eggs are oblong. If there is enough moisture, eggs will increase in size becoming round and twice their original size. Females may lay up to 100 eggs.



Green June beetle pupa and pupal cell, Jim Baker, North Carolina State Univ., Bugwood.org (*left*)



Green June beetle larva, Clemson University - USDA Cooperative Extension Slide Series, Bugwood.org (*right*)

Larvae feed on roots of ornamental plants, turfgrass, vegetables, corn, sorghum, oats, and alfalfa. One different characteristic of the larva is that it crawls on its back when moving on the soil surface. Adult green June beetles eat the leaves of many trees and shrubs and occasionally will attack berries and tree fruits. Adults will also feed on over-ripe fruit, and may be attracted to fruit baits. Soil amendments with high organic matter amendments and manures encourage infestations of green


(Continued on page 19)



Article written by Dr. Dennis Ring, Professor of Entomology,  
LSU AgCenter, Baton Rouge, (P) 225. 978.3881, (E) [dring@agcenter.lsu.edu](mailto:dring@agcenter.lsu.edu)

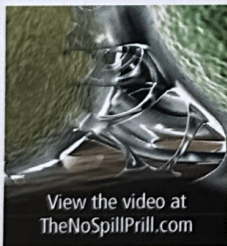


Driven by innovation  
Inspired by nature



More prills  
in the pot,  
more profit  
in your pocket.

Fusion Technology™  
effectively  
binds prills to container  
growing media.



View the video at  
[TheNoSpillPrill.com](http://TheNoSpillPrill.com)

- When nursery stock gets blown or knocked over you lose fertilizer, you lose money, through additional material and reapplication costs, or lower plant quality.
- Osmocote® Pro with Fusion Technology™ is available in 5-6 and 8-9 month formulations.
- Consult with an Everris™ Territory Manager to calculate what you're missing without the no-spill prill in your pots.



Osmocote®  
With  
**fusion**  
Technology™

© 2012 An ICL Fertilizers Company, Worldwide Rights Reserved.

Everris NA, Inc.  
800-492-8255  
Email: [info@everris.us.com](mailto:info@everris.us.com)  
[www.everris.us.com](http://www.everris.us.com)



*Landscape Design Sketchbook (Continued from page 10)*

forest to this in this 12,500 resident coastal community. They determined that the complex ecology of the city is dominated by live oak, cypress, loblolly pine, water oak, red oak, southern magnolia, sugarberry, pecan, ash and sweet gum. The trees of this city along with a 12% vegetated ground plane of shrubby understory absorb almost ½ million tons of pollutants a year.

The evergreen urban forest of the city sequesters 8600 tons of carbon worth over \$1.5 millions of dollars. They also calculated that the tree of the community produces energy savings through shading is well over \$80 thousands of dollars per year.

The study found that the urban forest canopy has been reduced to 41% of the area of the city. Over 150 thousand trees exist with 62% of them larger than 6" DBH. The average density calculates to 86 trees per acre and varies by land use with more trees over residential neighborhoods and less in parking lots and commercial districts.

But perhaps the most interesting fact coming from this study is that the value of the forest itself. Mandeville's urban forest is estimated to be worth \$766 millions of dollars. The environmental services involved with air, water, climate, erosion, stormwater and human health provided annually adds even more value.

## Rewriting the Codes

This information squarely shows the importance of trees to the health, welfare and quality of life in the City of Mandeville.

Knowing this the **Mandeville Planning Commission** can easily defend their landscape and tree ordinances. They can demonstrate the importance of their required greenbelts surrounding developed sites in the city.

Planners now have a tool to allow them to draft a **minimum canopy standard**. A standard of 60% for example will require that the present 41,42% tree cover be raised by 18.58%.

A minimum standard might be that each new development site plant at least 15 trees per acre. Residential districts may have a slightly higher standard.

Knowledge gained from this study may also allow the city to recommend that additional habitat preservation areas (**HPA**) be set aside or created on development sites. In

Florida, many communities require a minimum 10% of all developed sites to be left in a natural condition or rebuilt in a naturalized manner.

The knowledge can also be used to increase the amount of trees in commercial districts. This can easily be affected by setting a parking lot shading standard such as the standard used in the **City of Davis, California** for instance. Davis requires that 50% of the parking lot be shaded within fifteen years.

A sustainable urban forest provides many environmental services.

*Should readers like to contact the author, get in touch by email at [lsugreen-laws@aol.com](mailto:lsugreen-laws@aol.com). You may call the Robert Reich School of Landscape Architecture at 225.578.1434.*

*Gala (Continued from page 1)*

landscape industry. Then Rob Barry entertained us well as auctioneer for the live auction. Good food, drinks, and friendly conversation with a jazz trio background, combined for a relaxing and joyful atmosphere. In the end, the Foundation raised a net profit of over \$20,000 to be used for scholarships in January 2013 and funding for ornamentals research. The gold sponsor (\$5,000) was LNLA; silver sponsors (\$2,500) were BWI Companies and Windmill Nursery; and bronze sponsors (\$1,000) were Buddy & Dixie Lee, Newton Landscape Group, Jimstone Company, and Southeast Louisiana Nursery Association (SELNA). **THANKS** to everyone who attended, the many generous donors, and those who bought auction items. You made it possible and fun.

*Bug Doctor (Continued from page 17)*

June beetles.

Traps are only effective for monitoring first adult emergence. Monitoring of adults may be accomplished by jarring several branches of trees, and counting the number of beetles flying off.

Parasitic nematodes (*Steinernema* and *Heterorhabditis* species) can decrease numbers of white grubs. Treatments using *S. carpocapsae* have shown less than 50% control, while treatments using *H. heliothidis* have shown 80% control in the Midwest. Nematodes and imidacloprid may work synergistically.

Insecticides for green June beetles include carbaryl (Sevin®), chlorantraniliprole (Acelepryn®), clothianidin (Arena®), imidacloprid (Merit®, Season-Long Grub Control®), halofenozide (Mach2®), Ortho Grub-B-Gon®, thiamethoxam (Meridian®), and trichlorfon (Dylox®). Green June beetle larvae will die on top of the soil rotting and making a mess. (Shown right; Adult green June beetle, Natasha Wright, Florida Department of Agriculture and Consumer Services, Bugwood.org)

Managing adult green June beetles is difficult because new beetles fly in daily. However, applications for adult green June beetles may be needed when large numbers of beetles are feeding on foliage. Irrigation right after treatment of the soil or treatment right after rainfall is important in managing larvae.



# LNLA Donates \$25,000 to Hammond Research Station

At the July 25, 2012, LNLA Board of Directors meeting in Henderson, La., Dr. Regina Bracy requested and was granted a donation of \$25,000 from LNLA to support the landscape horticulture research and education program at the LSU AgCenter Hammond Research Station.

The vision of the Hammond Research Station is to develop their facility into the regionally recognized center for landscape horticulture research within the next 5 years. Achieving this goal will require the support of the nursery and landscape industry and its member associations.

Specifically, they plan to use this donation to establish a research evaluation garden in the 10-acre mixed pine stand south of the Margie Jenkins Garden. Monies are needed to install the landscape beds including irrigation, mulch, bed mix, plants, and labor. This will allow them to expand plant evaluations to include: Japanese maples for the deep South climate; heat-tolerant rhododendrons; under-utilized native species and cultivars; new azalea collections, and holly collection.

Future plans for the Hammond Research Station include: enlarge the conference room to a capacity of 150 (funding is anticipated); develop a field plot area for evaluating a larger number of new woody ornamental plants; construct an additional greenhouse/shade structure for container demonstration and evaluation research studies; continue efforts to become the largest and most regionally recognized herbaceous plant evaluation trial garden in the Gulf States area (serving USDA hardiness zones 8B-9A from the Florida panhandle to southeast Texas), including 500 to 800



species; continue the Louisiana Super Plants plant promotion and marketing program that began in 2010; and establish a research evaluation garden in the 10-acre mixed pine stand south of the Margie Jenkins Garden (this will be accomplished with the donation from LNLA). It is also planned that a few additional personnel will be employed at the Station to conduct the additional research and evaluations.

Congratulations to the Hammond Research Station and we look forward to the research and education efforts that will result from this expansion.

## THE SECOND GENERATION

Danny LaFleur, President  
Mike LaFleur, Sec./Treas.  
Yvette Smith, Office Sec.  
721 Goyo Road  
Washington, LA 70589  
(P) 800.447.6951  
(F) 877.826.9955  
(E) lafleurdanny@yahoo.com

Over 50 Years...  
of SUCCESS!

# LaFleur's Nursery, Inc.

*"Quality Is Our Specialty"*



- Palms
- Oaks
- Crape Myrtles
- Hollies
- Ligustrum
- Loquat
- Magnolia
- and more....!

**180 Acres of Clean & Attractive... Field-grown Trees & Shrubs**

*Ornamental Update (Continued from page 6)*

housed at Burden Center to aid with outreach efforts. Programming at both stations is being sustained long term in the LSU AgCenter business plan.

**Parish and Area Extension Programs** continue to serve clientele at the local level. Despite difficult budget times, the LSU AgCenter is committed to providing agricultural agents and 4-H program agents in each parish. We are better off than most states in terms of field staffing for extension efforts. Local governments are helping financially in providing LSU AgCenter support at the local level.

The LSU AgCenter delivers a tremendous amount of horticulture information weekly via **Mass Media**. The Get It Growing effort includes weekday radio spots, a weekly horticulture newspaper article and a weekly television spot. Another weekly newspaper article goes statewide. It includes landscape information from the Hammond Research Station. We also send out a weekly e-news update to 750 individuals involved professionally in ornamental horticulture (sign up if you do not yet receive this) and a twice monthly trial garden report to keep you updated on what is current and on-going in the industry. Horticulture Hints, our popular home horticulture extension newsletter, is still published quarterly. In addition, many of our faculty write for Louisiana Gardener magazine, the LNLA newsletter, Louisiana Turfgrass Association newsletter and elsewhere. Horticulture is the number one searched topic of interest on the LSU AgCenter website – [www.lsuagcenter.com](http://www.lsuagcenter.com). The LSU AgCenter helps you market ornamental plants via the **Louisiana Super Plant** program – [www.lsuagcenter.com/superplants](http://www.lsuagcenter.com/superplants). **Spring Garden Shows** held in Hammond, Covington, Lafayette, New Orleans, Lake Charles, Houma, Baton Rouge and Abbeville, and primarily sponsored by the LSU AgCenter, are a great local retail outlet for horticulture businesses to promote products, sell products, promote services and sell services.

You can still have a **Farm Visit** from a LSU AgCenter faculty member. Extension faculty routinely travel around the state to give programs and visit with growers and retailers about ornamental plant problems and landscaping issues. Many other states have cut back on these services, but they continue to be a strong component of what we do at the LSU AgCenter. LSU AgCenter horticulture faculty participate and have displays at all the major **Nursery Trade Shows** in the Louisiana area – namely the Gulf States Horticultural Expo, Nursery and Landscape Expo and the Southeast LA Nursery Association trade show.

**Networking with Other Allied Organizations and Businesses** around the state, LSU AgCenter faculty provide collaborative efforts with the Louisiana Farm Bureau Federation, Louisiana Department of Agriculture and Forestry and more to stay →

*Association Updates (Continued from page 9)*

and flower and vegetable seeds! If you have more of these things than you need, and you know we all do, bring them to the meetings to share and swap with your fellow members! NOHS is always on the lookout for new and interesting speakers. If you or someone you know is interested in speaking at one of our monthly meetings, please let us know. Please email [NOHS@agcenter.lsu.edu](mailto:NOHS@agcenter.lsu.edu) for the 2012 membership form or more information on NOHS and upcoming meetings. Your support is greatly appreciated. See you soon!

► **SOUTHEAST LOUISIANA NURSERY ASSOCIATION**

The SELNA Summer business meeting was to be held on August 28th, but was canceled due to Hurricane Issac. Dr. Nick Singh, with the LSU AgCenter Plant Diagnostic Center, was scheduled to speak about the rose rosette disease that is spreading in north Louisiana. The Fall meeting will be held in late October or early November.

The annual SELNA Trade Show will be on Friday, September 28, 2012, at Magnolia Park in Folsom, La. Landscape architects will earn 5 CEU's for all day attendance. CEU's will be earned by visiting exhibit booths, as well as attending speaker sessions. The Trade Show is still offered free of charge to green industry professionals, especially landscapers and retailers. We hope you'll come. If this newsletter gets to you after September 28, we hope you came and enjoyed visiting with our growers and suppliers.

Contact SELNA secretary Annie Coco at [acoco@agcenter.lsu.edu](mailto:acoco@agcenter.lsu.edu) or visit our website at [www.selna.net](http://www.selna.net) for a list of plants available from our growers.

*Thank You's (Continued from page 4)*

mentioning your name during the fifth general session on Thursday, June 7<sup>th</sup>.

Included in this mailing is a certificate of recognition and a copy of our program.

Once again, we thank you for your generosity and hope we can count on your support in the upcoming year. Please feel free to contact me if you have any questions or concerns.

Sincerely,  
Mike Roy, Chairman of the Board, Louisiana FFA Foundation

abreast of currently important activities.

**Social Media** is more prominent these days. The LSU AgCenter Facebook page is dominated by great horticulture information. In addition, the LSU AgCenter Hammond Research Station Facebook page is the most prominent and liked of all the experiment station pages. We contact over 5000 individuals weekly with landscape information.

Article provided by Allen Owings, professor of Horticulture, Hammond Research Station, Phone 985-543-4125, Fax 985-543-4124, Email [aowings@agcenter.lsu.edu](mailto:aowings@agcenter.lsu.edu)







# Certified Nursery & Landscape Professional Manual Review and Exam - 2013

**January 24-25**  
 Burden Conference Center  
 LSU AgCenter  
 4560 Essen Lane  
 Baton Rouge, LA 70809

Begins at  
9am daily

**July 25 - 26**  
 Ira Nelson Horticulture Center,  
 University of LA at Lafayette  
 2206 Johnson St.  
 Lafayette, LA 70503

Register for the Manual Review and Exam by selecting the appropriate location  above:

Company Name \_\_\_\_\_  
 Address \_\_\_\_\_  
 City, State, Zip \_\_\_\_\_  
 Phone/Email (P) \_\_\_\_\_ (E) \_\_\_\_\_

Person(s) Registering:	Name & Section	Fees
\$75 per person for review and full exam.	_____	_____
\$15 per section(s) re-taken by each person. * Please specify re-take section(s) if known. Sec #1- Plant Classification, Growth & Development Sec #2- Understanding Pests and Their Control Sec #3- Culture of Nursery Stock in Retail Yards Sec #4- Landscape Contracting, Tree & Turf Mgt. Sec #5- Plant Identification	_____ _____ _____ _____	_____ _____ _____ _____
\$35 per person for manual review <u>only</u> (no exam) in preparation for the LDAF license test or professional training.	_____ _____	_____ _____
\$60 per copy for "Louisiana Manual for the Environmental Horticulture Industry," the suggested manual for this course.	\$60 x _____ @ Manual =	\$ _____
	Shipping & Handling \$3 x _____ @ Manual =	+ S/H \$ _____

Make check or money order payable to:  
 Louisiana Nursery & Landscape Association

Total \$ \_\_\_\_\_

Mail check to:  
 Louisiana Nursery & Landscape Association  
 11050 Hwy 441  
 Amite, LA 70422

Check # \_\_\_\_\_

Date \_\_\_\_\_

For further information contact:  
 Annie Coco, LNLA Executive Secretary. (C) 985.789.4301, (E) [acoco@agcenter.lsu.edu](mailto:acoco@agcenter.lsu.edu)



**MINUTES LNL A BOARD OF DIRECTORS MEETING**  
**Wednesday, April 25, 2012, 10:00 AM**  
**Ralph & Kacoo's Restaurant**  
**Baton Rouge, LA**

The meeting of the LNL A Board of Directors was held on Wednesday, April 25, 2012, at Ralph & Kacoo's Restaurant in Baton Rouge, La. Total attendance was 16 people. Board Members attending were: Brian Bridges, Annie Coco, Todd Ellefson, Tom Fennell, Margie Ann Jenkins, John R. Kavanaugh, Buddy Lee, Mark Murrell, Pat Newman, Pete Newton, Allen Owings, Buddy Perino. Quorum is 7 voting board members; 10 present; quorum established. Guests/others: Brian Breaux, Laura Crnko, Tad Hardy, Ansel Rankins. Absent were: Rick Cicero, Gerritt Monk, Renee C. Vanlangendonck.

President Todd Ellefson called the meeting to order at 10:05 am. All stood and participated in the Pledge of Allegiance. Todd welcomed everyone.

Minutes of Last Meeting

The minutes of the last board meeting on Jan. 20, 2012, were distributed by Annie Coco and reviewed by those present. They had also been emailed prior to this meeting. The annual budget was added since the email version was sent. It was noted that the bottom line shows a deficit of \$2500, but not changed at the meeting. Pete Newton motioned to accept minutes of Jan. 20 meeting, as amended; second by MargieAnn Jenkins; motion carried.

Financial Report

Pat Newman provided copies of the financial report. As a point of interest, she reported the Foundation has over \$100,000 total. Mark Murrell motioned to accept the report; second by Pete Newton; motion carried.

*Statement of Activities – First Quarter ending March 31, 2012*

*Revenues (Income)*

Dues	\$21,804
Newsletter Ads	6,990
CNLP Program	846
Hort Manuals	498
Meadowbrook	875
Tree Books	87
Donations	<u>500</u>
<i>Total Revenues</i>	<u><i>\$31,600</i></u>

*Expenses*

Contract Labor	\$ 8,700
Awards	969
Bank Charges	5
Internet	448
Meetings	134
Memberships	360
Office Expense	329
Postage	1,313
Printing	1,168
Professional Fees	2,150
Promotions	238
Telephone	107
Trade Shows – GSHE	11,201
Travel: In-State	507
Travel: Out-of-State	142
Website	<u>890</u>
<i>Total Expenses</i>	<u><i>\$28,661</i></u>
<i>Other Revenue – Interest Income</i>	<i>\$ 77</i>
<i>Change in Net Assets</i>	<i>\$ 3,016</i>

*Statement of Assets & Liabilities – As of March 31, 2012*

*(Continued on page 24)*



Board Minutes (Continued from page 23)

<i>Assets</i>	
Cash in Bank	\$ 33,284
Pay Pal Account	250
Petty Cash	1,000
Capital One Savings	102,397
NSF Receivable	185
Office Equipment	2,334
Accumulated Depreciation	<u>(1,249)</u>
<i>Total Assets</i>	<u>\$138,201</u>
<i>Liabilities</i>	\$ 0
<i>Total Net Assets</i>	<u>\$138,201</u>

GSHE Report

Pat Newman reported there were \$33,098.98 was received for 2012 GSHE. The program book will be correct in its listing of LNLA membership and officers next year. The GSHE group's next meeting will be May 17. There was discussion on the pros and cons of moving GSHE to Mississippi Gulf Coast Coliseum after next year. We (LNLA) made more money when held in Alabama.

Membership & Newsletter Ads Reports

Laura Crnko distributed her report of dues which have been coming in. There are currently a total of 364 members in LNLA, including 52 new (34 are students). Renewal notices were mailed recently and coming in. Members get a new certificate each year after their dues are paid. There was brief discussion of when the cutoff date should be for new memberships to count for the following year. New members who join in September or later each year, dues count for next year.

Laura also distributed a form for newsletter ads pricing for 2012. All regulars have paid for this year.

Todd Ellefson thanked her for coming to the meeting, and told her she has the Board's support to do what she needs.

LDAF Update

Tad Hardy reported the La. Dept. of Agriculture & Forestry budget is facing a possible cut in House Bill 822, which will take funds that came from boll weevil eradication, horticulture, and other funds to be redirected to Medicaid. The bill author is not necessarily supportive of his bill, but was asked to bring it up by the Governor. They are trying to find a way to raise their budget and be able to spend it as needed.

LDAF hired 4 new personnel in 2011 and 3 in 2012. Hiring of inspectors is done to reach their district goals. Complaints are their priority. LDAF will be hiring a replacement for Tad's previous position of handling quarantine programs.

Pest issues were reported. No boxwood blight has been found yet in Louisiana, but it is in 13 states now. They are working on a certified compliance program for growers to do and LDAF to inspect. They have had issues with plants going to Texas, especially camellia blight, for which buds are required by Texas to be pulled off. There was also an issue concerning sweet potato plants, but that was okay and resolved with contacts made.

The national plant Board is working on SANC, a systems approach to reduce risk at the nursery level by targeting risk areas in the nursery. This will be voluntary, for those nurseries who want it.

Ansel Rankins reported LDAF recently sent out a press release from Commissioner Mike Strain advising homeowners to hire licensed professionals. A list of those licensed is on the LDAF website. To report violators, those operating without a license, a call can be made to LDAF and tell where the person is working and vehicle license plate number if possible; callers do not have to give their own name. When rained out or otherwise held up during any given day, LDAF inspectors have gone through newspaper ads and yellow pages to find unlicensed people and get them to comply. They are seeing a rise in the number of complaints.

LSU AgCenter Update

Allen Owings reported that due to budget cuts, several research stations have been closed or are closing. The stations at Burden and Hammond are not closing.

He distributed flyers for upcoming events: Nursery & Landscape Associations Open House on May 12 in Hammond; Golf Shootout on June 15 in Baton Rouge; CNLP on Aug 2-3 in Lafayette; MNLA Mid South Green Industry Conference on June 19-20 in Pearl, Ms; LIA Irrigation Basics on June 6-7 in Baton Rouge. The Azalea Symposium held recently went well.

Boxwoods can be checked for boxwood blight this year at no charge. Because money has been coming in to the Hammond Research Station, they may hire another person there to do market development & marketing. They are doing research on hollies.

(Continued on page 25)

Board Meeting (Continued from page 24)

Annie Coco reported she has done/will do LNLA letters of support for two grant proposals for the LSU AgCenter.

LSU AgCenter Coalition

Pat Newman reported she met with the Chancellor recently. There is a group of people who want the whole LSU system under the Baton Rouge campus chancellor, including LSU AgCenter, Medical School, Law School and other(s). Patents secured by LSU AgCenter and Medical bring in money; but the main reason is believed to be power and prestige. President Lombardi favors keeping those entities separate from the Baton Rouge campus, and even having them listed as separate items in the state budget. The LSU AgCenter Chancellor has asked for emails, mail, and/or calls to be made to legislators to make them aware of the importance of agriculture and the benefits of staying separate. LNLA needs to decide if we will take a stand as a group. The Board agreed a mass email to members and notice in the newsletter with a sample letter from Pat should be sent.

LFBF Update

Brian Breaux reported on the La. Farm Bureau Federation. They watch for legislation that may affect agriculture. He commented that this "green industry" is in every parish in the state. The US Secretary of Labor has recently proposed eliminating exemptions concerning restricting 14-16 year olds from doing farm work; if it goes through, it may have significant impact on family farms. There are proposed changes to H2B labor rules to make it more like H2A. Under Obamacare, an employer with over 50 people for 4 months must provide health care; Joe Wilson amendments exempt H2A workers. E-verify will probably pass, so all alien workers must be verified. The farm bill draft proposes a shift from cyclical payments to insurance type payments with 70% coverage; also B cap on bark to be used as an energy resource. More agriculture commodity organizations are increasing their member dues to help fund research; the rice growers group gives \$1.5 million per year.

LNLF SR Update

Pete Newton reported the Gala III will be at the LSU Stadium Club on Friday, June 22, 2012. Allen Owings distributed cards and Annie Coco distributed brochures to be used to inform potential attendees and sponsors. More sponsorships are needed. There will be silent and live auctions; items are requested. Todd stated he needed the tax ID number on letterhead; Allen will provide that. Committee members will meet at the Hammond Research Station to help stuff envelopes on May 10 at 9 am.

CENLA CNLP Training for Vo Ag Teachers

Annie Coco reported the planning for the June 12-13 training is ongoing. The Orchard Foundation is recruiting teachers and buying manuals for the teachers who participate. She is not sure yet how many will attend.

Impact Management Group Coalition for Landscape Contractors

Annie Coco reported she was contacted by a lady from a group requesting LNLA join a coalition being put together to keep landscape contractors from being classified as employees of those who hire them. In some states, this has been done to facilitate tax collections; it has not yet been proposed in Louisiana. Because of the length of the materials about this, Annie will forward the emailed information to Board members to review.

Arborist Position on Board

Todd Ellefson received a request from an arborist to include them in LNLA and on the Board, so they have a voice in a group. The Louisiana Arborist Association disbanded some time ago. This may increase LNLA membership. In the 1980's there was an arborist included on the Board (then LAN), but then they started their own association. There was some discussion as to whether other positions, such as landscape architect, contractor, maintenance, etc. should also then be specified on the LNLA Board. Qualified Board members will continue to be asked to serve, but no action was taken to specify a certain representation. Amelia Kent may be invited to a Board meeting in the future.

Donations/Funding Requests

**LCAAA Conference Sponsor** - \$250 has been given in the past. Buddy Lee and funding committee members recommended and approved.

**Louisiana 4-H Foundation** - Letter from them confirmed LNLA has given \$6,250 since 1993; they requested \$800 for the Horticulture Judging Contest. After some discussion, \$500 was approved by the committee, and recognition in their program, as offered, is desired by the Board.

**Louisiana FFA Foundation** - Request for \$750 Proficiency Award sponsor or Career Development Event. After some discussion, John Kavanaugh motioned to donate \$750 for the Nursery/Landscape Career Development event; second by Buddy Lee; motion carried.

**Horticulture Research Institute** - Allen Owings pointed out that they fund research on crop pest problems. Buddy reported he has investigated and is comfortable with what they're doing now. Dan Batson issued a challenge at the annual meeting at GSHE that he will match funds donated; he is located near the Poplarville research station. Since no one from Louisiana and Mississippi has ever

(Continued on page 26)



**CALENDAR OF EVENTS****October 2012 - August 2013****2012**

- Oct 3 Ornamental & Turfgrass Pesticide Applicator Recertification**  
Lafayette, La.  
Contact: [www.lpca.org](http://www.lpca.org)
- Oct 4 Ornamental Horticulture Field Day**  
MSU, South MS Branch Experiment Station, Poplarville, MS  
Contact: Gene Blythe, (P) 601-795-4525
- Oct 5-6 Fall Flower & Garden Fest**  
Truck Crops Experiment Station, Crystal Springs, MS  
Contact: <http://msucares.com/fallfest>
- Oct 10 LNLA Board of Directors & Officers Meeting**  
Hammond Research Station, Hammond, LA  
Contact: Annie Coco, (P) 985-789.4301, (E) [acoco@agcenter.lsu.edu](mailto:acoco@agcenter.lsu.edu)
- Oct 11 Landscape Horticulture Field Day**  
Hammond Research Station, Hammond, LA  
Contact: Regina Bracy, (E) [rbracy@agcenter.lsu.edu](mailto:rbracy@agcenter.lsu.edu)
- Oct 12-13 Southern Garden Symposium**  
St. Francisville, La.  
Contact: [www.southerngardensymposium.org](http://www.southerngardensymposium.org)
- Nov 7-8 LIA Irrigation Basics Certification & Re-Certification**  
Ralph & Kacoo's, Baton Rouge, LA  
Contact: Severn Doughty, Sr., (P) 318.872.4677,  
(E) [scd357@cmaccess.com](mailto:scd357@cmaccess.com)
- Nov 15 Ornamental & Turfgrass Pesticide Applicator ReCertification**  
Kenner, La.  
Contact: [www.lpca.org](http://www.lpca.org)
- Dec 5 LNLA Board of Directors & Officers Meeting**  
Burden Center Orangerie, Baton Rouge, LA  
Contact: Annie Coco, (P) 985-789.4301, (E) [acoco@agcenter.lsu.edu](mailto:acoco@agcenter.lsu.edu)

**2013**

- Jan 16-18 Gulf States Horticulture Expo**  
GSHE, Arthur Outlaw Convention Center, Mobile, AL  
Contact: [www.gshe.org](http://www.gshe.org)
- Jan 17 LNLA Annual Membership Breakfast & Meeting**  
GSHE, Arthur Outlaw Convention Center, Mobile, AL  
Contact: Annie Coco, (P) 985-789.4301, (E) [acoco@agcenter.lsu.edu](mailto:acoco@agcenter.lsu.edu)
- Jan 18 LNLA Board of Directors & Officers Meeting**  
GSHE, Arthur Outlaw Convention Center, Mobile, AL  
Contact: Annie Coco, (P) 985-789.4301, (E) [acoco@agcenter.lsu.edu](mailto:acoco@agcenter.lsu.edu)

- Jan 24-25 Certified Nursery & Landscape Professional Review and Exam**  
Burden Conference Center, LSU AgCenter, Baton Rouge, LA  
Contact: Annie Coco, (P) 985-789.4301, (E) [acoco@agcenter.lsu.edu](mailto:acoco@agcenter.lsu.edu)
- Feb 7 Louisiana Turfgrass Association Basic Lawn Care Workshop**  
Hammond Research Station, Hammond, La.  
Contact: Ron Strahan, (E) [rstrahan@agcenter.lsu.edu](mailto:rstrahan@agcenter.lsu.edu)
- Feb 21 Landscape Pest Management Workshop**  
Hammond Research Station, Hammond, La.  
Contact: Allen Owings, (E) [aowings@agcenter.lsu.edu](mailto:aowings@agcenter.lsu.edu)
- Jan 19 Hilltop Annual Symposium**  
Baton Rouge, La.  
Contact: Hilltop (E) [hilltop@tigers.lsu.edu](mailto:hilltop@tigers.lsu.edu)
- June 18-19 Mid South Green Industry Conference**  
Location TBA  
Contact: MSNLA at [haleymsnla@aol.com](mailto:haleymsnla@aol.com)
- July 25-26 Certified Nursery & Landscape Professional Review/Exam**  
Ira Nelson Horticulture Center, ULL, Lafayette, LA  
Contact: Annie Coco, (P) 985-789.4301, (E) [acoco@agcenter.lsu.edu](mailto:acoco@agcenter.lsu.edu)
- August 5-7 Southern Nursery Association, Atlanta, Ga.**  
Contact: (W) [www.sna.org](http://www.sna.org)

*(Continued from page 25)*

contributed in the past, the research funded has been elsewhere. Some research has been for ARS that gets patented; the consensus of the Board was they need to make the results available to all. Mississippi has given over \$1,600 (5 cents per mile of his fund-raising trip) this year. No action taken at this time.

**Nursery & Landscape Golf Shootout** – Committee recommended and approved \$500, as in the past.

Annie Coco apologized to Buddy Lee for not sending these requests to him prior to the meeting for his committee to review and make approvals or recommendations to the Board. She will do so in the future.

**Executive Secretary Search**

Annie Coco left the room for the Board to hear a report from Mark Murrell, search committee chairman. Interview(s) will be scheduled.

There being no further business, Buddy Lee motioned to adjourn; second by Margie Ann Jenkins; meeting was adjourned at 2:00 pm.

The Louisiana Nursery & Landscape News is the official publication of the Louisiana Nursery & Landscape Association, Inc. Contact LNLA's Editors if you have green industry news, announcements, have questions or comments concerning it's content. Visit our website at [www.lnla.org](http://www.lnla.org).

The Louisiana Nursery & Landscape Association is a non-profit organization devoted to serving the 'green industry' in Louisiana. However, according to the IRS, contributions made by donors are NOT tax deductible. This publication is not copyrighted. Consequently, it can be copied and used freely. However, the editors request that when copies are made or distributed, that credit be given to the publication and it's authors, including the date the information was published in the newsletter.





Growing Value  
Growing Selection  
Growing Satisfaction  
Growing to Serve You

Price

Selection

Service

Quality

800-535-1887

Windmill Nursery 12398 Hwy. 25 Folsom, LA 70437

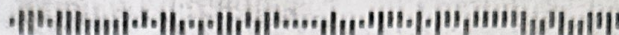




**Louisiana  
Nursery &  
Landscape  
ASSOCIATION**  
11050 Hwy 441  
Amite, LA 70422

RETURN SERVICE REQUESTED

PRESORT STD  
US POSTAGE  
PAID  
BATON ROUGE, LA  
PERMIT NO 2035



12 3RD QTR \*\*\*\*\*AUTO\*\*3-DIGIT 704  
Annie Coco 1 1  
LNLA, Executive Secretary  
11050 Highway 441  
Amite LA 70422-7179

**Plant problems? We can help!**

**Routine Diagnostic \$20**

The LSU AgCenter's Plant Diagnostic Center is a one-stop shop for all your plant health problems. The center provides rapid, accurate diagnosis of the cause of the problem and delivers best management practices recommendations for long-term management.

**LSU AgCenter**  
Plant Diagnostic Center

For more information, visit our website: [LSUAgCenter/PlantDiagnostics](http://LSUAgCenter/PlantDiagnostics)

[www.lnla.org](http://www.lnla.org)

# BRACY'S

**Reliable. Consistent. Effective. Service.**  
wholesale plants to garden centers and the landscape industry



Retail Quality  
Broad Selection  
On-time Delivery  
Customer Support

Can you afford anything less?



(p) 800-899-4716 • (f) 985-748-9955  
[sales@bracys.com](mailto:sales@bracys.com)